

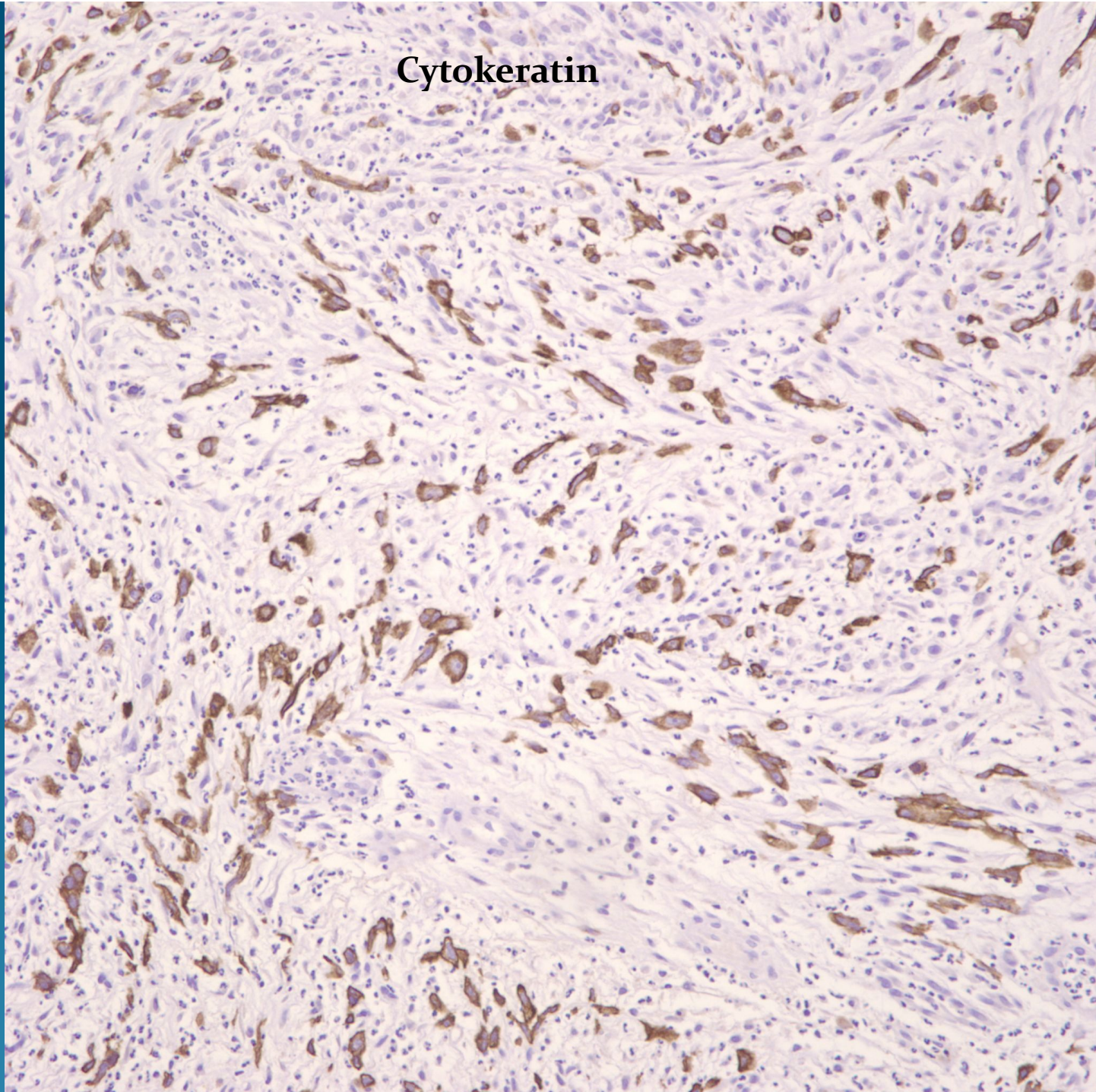
Appropriate differential diagnostic considerations include all except:

- A. Spindle cell melanoma
- B. Atypical fibroxanthoma
- C. Leiomyosarcoma
- D. Sarcomatoid carcinoma
- E. Myxoid liposarcoma

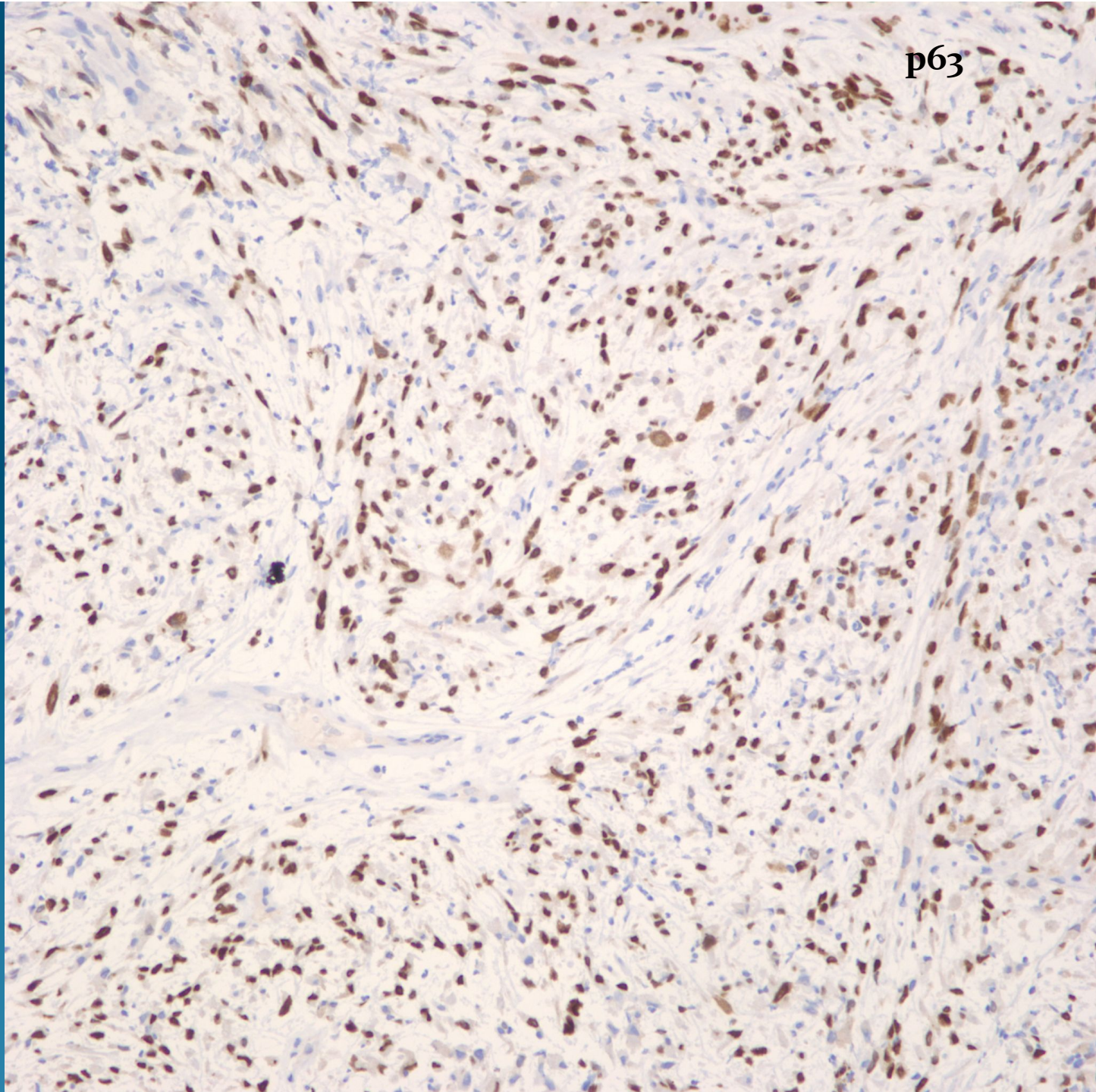
Answer-Myxoid liposarcoma

- This is an example of a malignant spindle cell neoplasm.
- One section shows a remnant of epidermis with the tumor cells effacing the dermal-epidermal junction
- Additional immunostains were helpful in resolving this diagnosis

Cytokeratin



p63



Diagnosis-Sarcomatoid Carcinoma

- The tumor cells show strong focal positivity for Cytokeratin and diffuse strong positive staining for p63. The latter is often positive in cutaneous squamous cell carcinomas.
- Pertinent negative stains for this tumor included CD68, Smooth muscle actin, S100, HMB-45, MelanA, and CD31.

Sheets of
pleomor-
phic cells

No melanin
pigment or
glandular
structures

Numerous
Atypical
MF

